



RECP #: 752709
 RECORDED 5/8/2019 AT 1:13 PM BK# 2620 PG# 1751
 Debra K. Lee, CLERK OF LARAMIE COUNTY, WY PAGE 1 OF 1

STATE OF WYOMING CORNER RECORD

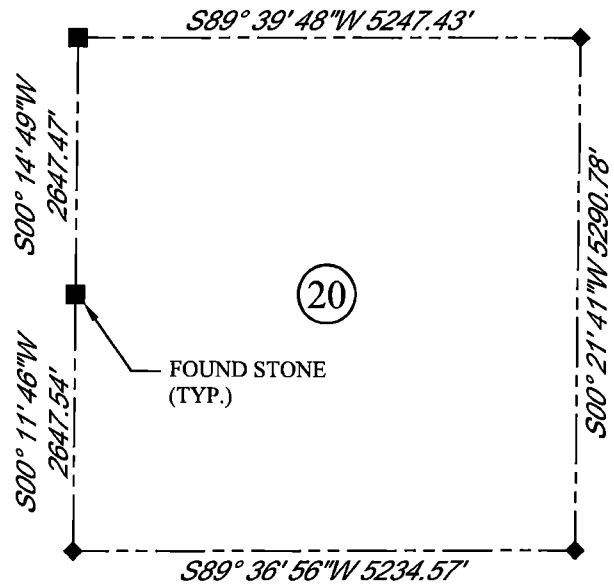
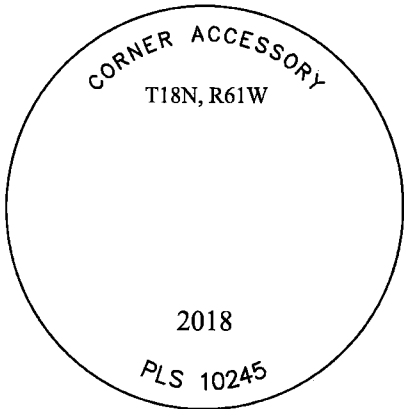
(In compliance with the CORNER PERPETUATION AND FILING ACT, Wyoming Statutes, 1997 Section 33-29-140, et. seq., and the Rules and Regulations of the Board of Registrations for Professional Engineers and Professional Land Surveyors)

WEST QUARTER CORNER SECTION 20, T. 18 N., R. 61 W., 6TH P.M., LARAMIE COUNTY, WYOMING

GLO: A SANDSTONE 18X10X7 SET 12" DEEP, MARKED 1/4 ON WEST SIDE FOR 1/4 SEC COR.
FOUND: FIRM SET STONE 12X10X10, WITH "X-3" WEST FACE OF STONE FALLS, 1' ON WEST SIDE OF NORTH & SOUTH FENCE CORNER. 52.8' NORTH OF E,W,N FENCE CORNER.
SET: 3.25" ALUMINUM CAP ON #5 REBAR, 4" ABOVE SURFACE. MARKED AS SHOWN. CAP IS SET ON EAST SIDE OF FOUND STONE.



SCALE: NONE
 NORTH DETERMINED BY
 G.P.S OBSERVATIONS



LEGEND:

- FOUND BLM CAP
- FOUND USFS CAP
- FOUND STONE
- FOUND PRIVATE MONUMENT
- ◆ CALCULATED POSITION
- ▲ SET MONUMENT (LS10245)
- SECTION LINE

DATE OF FIELD WORK: 10/05/2018 OFFICE REFERENCE: MERIDEN

CROSS INDEX DIAGRAM

	1	2	3	4	5	6	7	8	9	10	11	12	13	14	15	16	17	18	19	20	21	22	23	24	25		
A																										B	
B																											C
C			6		5			4		3		2		1													D
D																											E
E																											F
F																											G
G			7		8			9		10		11		12													H
H																											I
I																											J
J																											K
K																											L
L			18		17			16		15		14		13													M
M																											N
N																											O
O																											P
P			19		20			21		22		23		24													Q
Q																											R
R																											S
S			30		29			28		27		26		25													T
T																											U
U																											V
V																											W
W																											X
X			31		32			33		34		35		36													Y
Y																											Z
Z	1	2	3	4	5	6	7	8	9	10	11	12	13	14	15	16	17	18	19	20	21	22	23	24	25		

WOOD
 2615 AVIATION DRIVE
 SHERIDAN, WY 82801
 PH: 307-675-6400



THIS CORNER RECORD WAS
 PREPARED BY ME OR UNDER
 MY DIRECTION AND
 SUPERVISION,
 SEAL AND SIGNATURE

